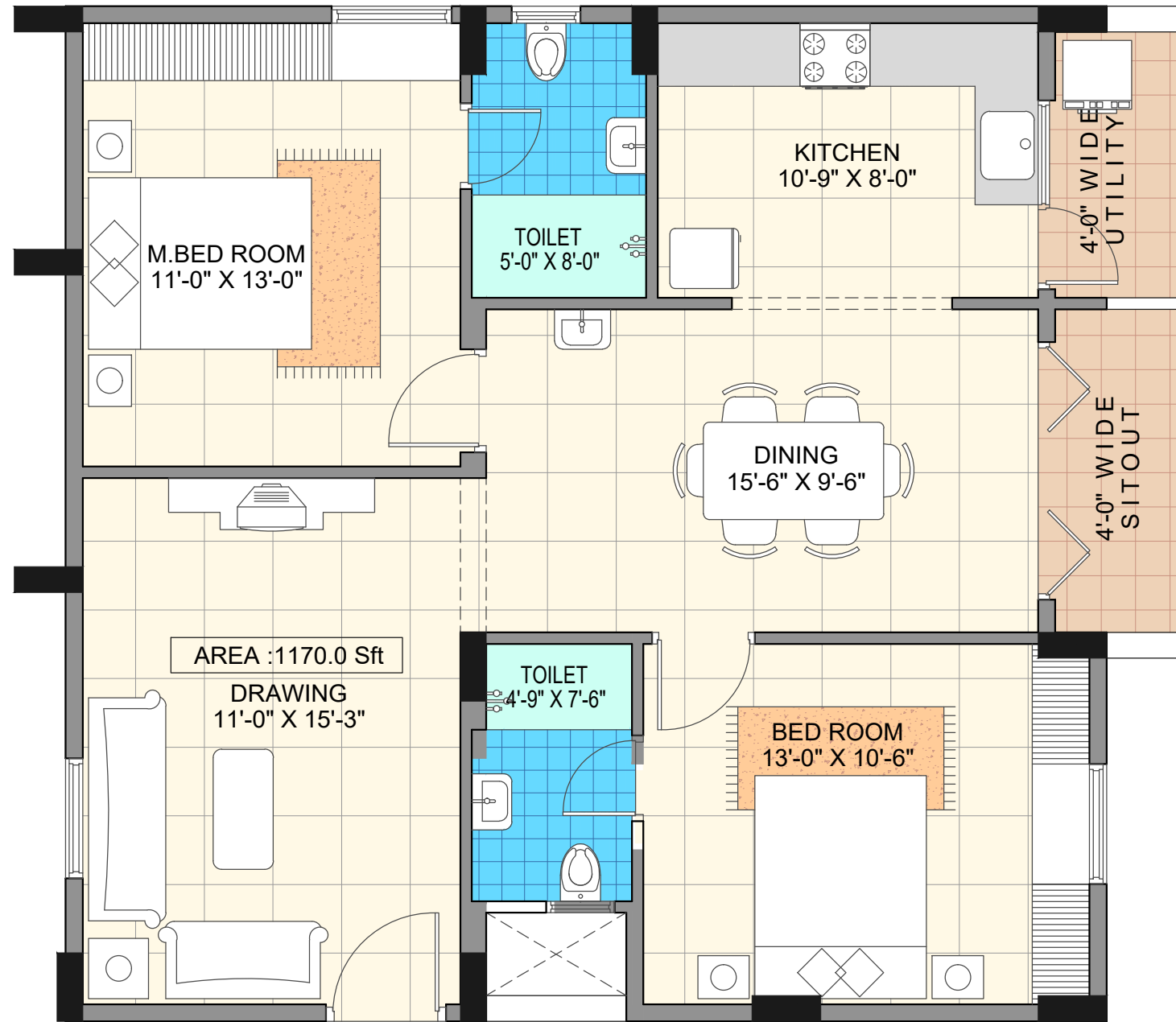


Wing - B (Ground Floor)

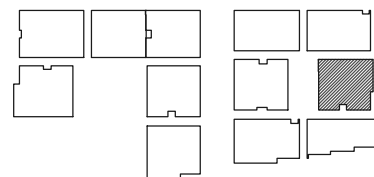
Unit - 6



2 BHK

Saleable Area - 1170 Sq. Ft.



Key Plan



PROJECT :  SAROG <i>Iris</i> PROPOSED RESIDENTIAL APARTMENTS AT GUNJUR, BENGALURU.	CLIENT : SAROJ BUILDERS	<table border="1"> <tr> <td>REV.NO</td> <td>DATE OF REV</td> <td>DISRIPTION OF REVISIONS</td> </tr> <tr> <td colspan="3" style="text-align: center;">REVISIONS</td> </tr> </table>	REV.NO	DATE OF REV	DISRIPTION OF REVISIONS	REVISIONS			DRAWN: RAJA CHECKED: SASHI APPROVED:	SCALE : NTS DATE: 09-10-2019 PROJECT NO : DRAWING NO :	ORIENTATION  REV. NO	ARCHITECTS: ARIEN DESIGN 6/1, DISCRETE NILAAYA, 6TH MAIN, JEEVAN BHEEMA NAGAR, BENGALURU. PH : 080 - 41261267.	/0.78
	REV.NO		DATE OF REV	DISRIPTION OF REVISIONS									
REVISIONS													
TITLE : UNIT PLANS	ID	REV. NO											