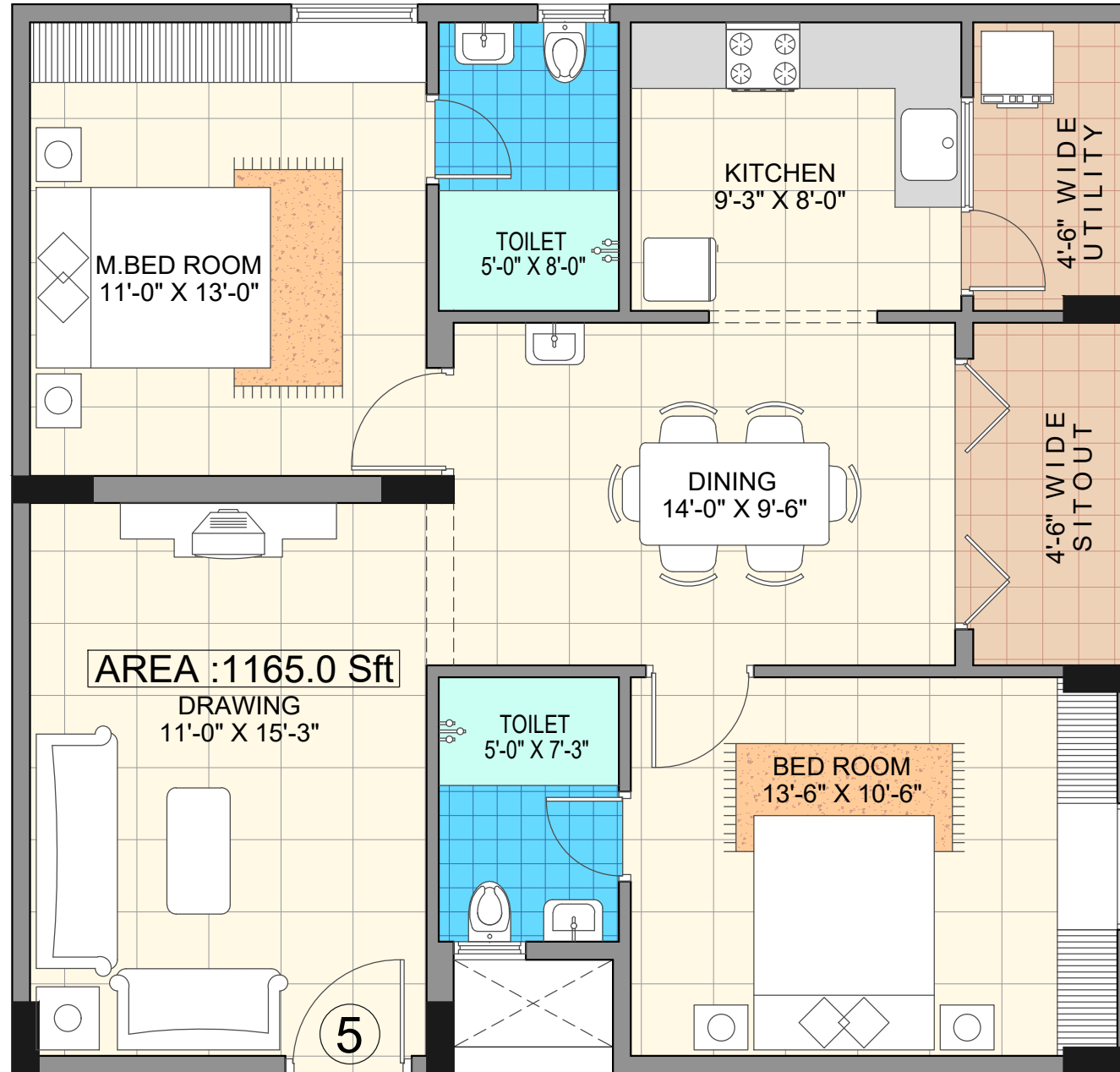
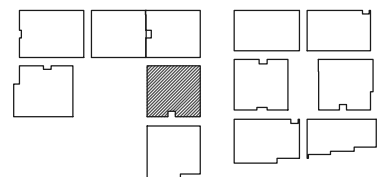




Wing - A
 Unit - 6
 2 BHK
 Saleable Area - 1165 Sq. Ft.



Key Plan



PROJECT :  SAROJ <i>Iris</i> PROPOSED RESIDENTIAL APARTMENTS AT GUNJUR, BENGALURU.	CLIENT : SAROJ BUILDERS	<table border="1"> <thead> <tr> <th>REV.NO</th> <th>DATE OF REV</th> <th>DISCRIPTION OF REVISIONS</th> </tr> </thead> <tbody> <tr> <td colspan="3" style="text-align: center;">REVISIONS</td> </tr> </tbody> </table>	REV.NO	DATE OF REV	DISCRIPTION OF REVISIONS	REVISIONS			DRAWN: RAJA CHECKED: SASHI APPROVED:	SCALE : NTS DATE: 09-10-2019 PROJECT NO : DRAWING NO :	ORIENTATION  REV. NO	ARCHITECTS: ARIEN DESIGN 6/1, DISCRETE NILAAYA, 6TH MAIN, JEEVAN BHEEMA NAGAR, BENGALURU. PH : 080 - 41261267.	/0.78
	REV.NO		DATE OF REV	DISCRIPTION OF REVISIONS									
REVISIONS													
TITLE : UNIT PLANS	ID	REV. NO											