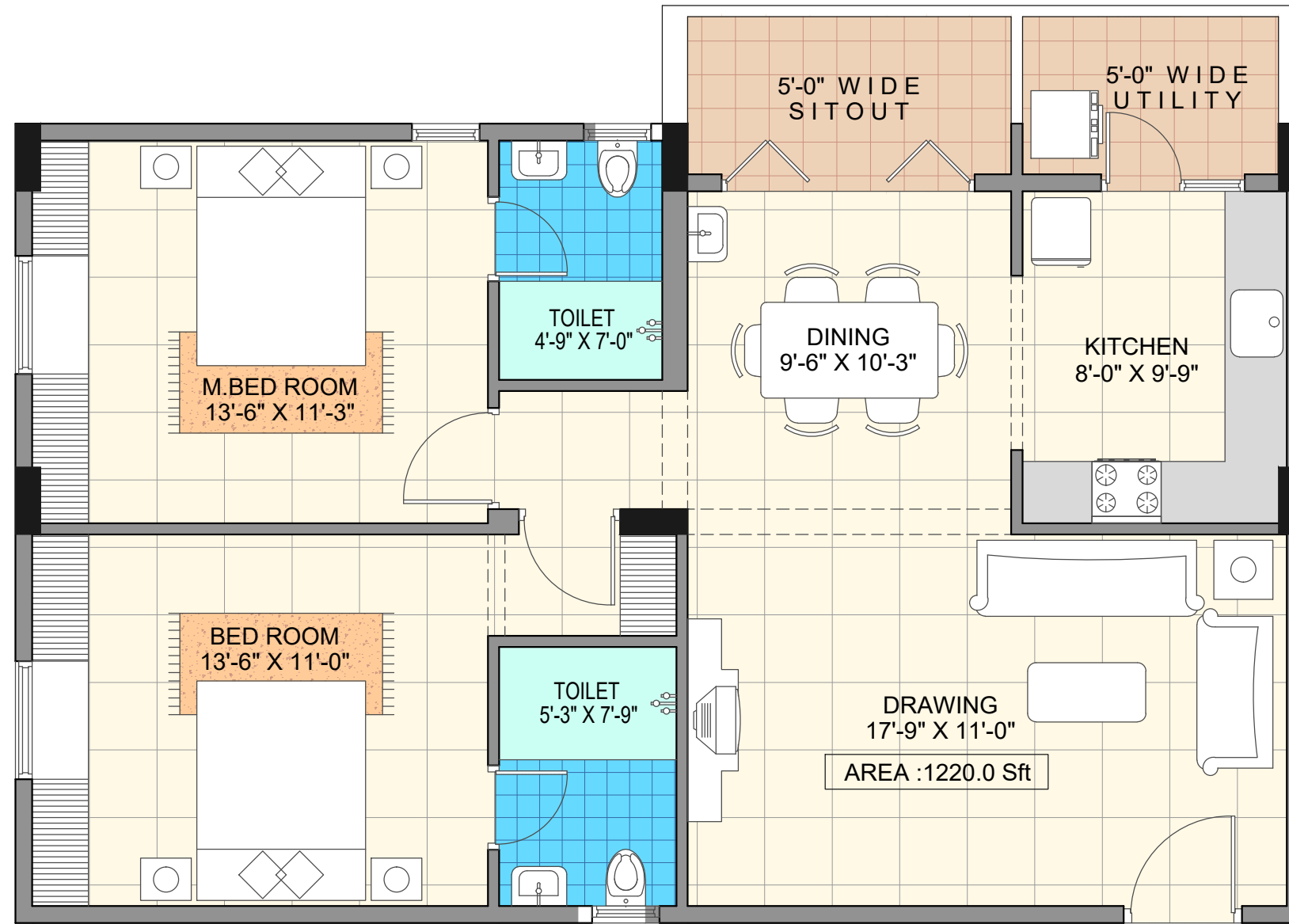


Wing - B (Typical Floor)

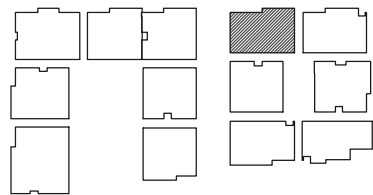
Unit - 4

2 BHK

Saleable Area - 1220 Sq. Ft.



Key Plan



PROJECT :



SAROG
Iris
PROPOSED RESIDENTIAL APARTMENTS
AT GUNJUR, BENGALURU.

CLIENT :

SAROG BUILDERS

TITLE :

UNIT PLANS

REV.NO	DATE OF REV	DISCRIPTION OF REVISIONS
REVISIONS		

DRAWN: RAJA

SCALE : NTS

CHECKED: SASHI

DATE: 09-10-2019

APPROVED:

PROJECT NO .

ID

DRAWING NO :

ORIENTATION



REV. NO

ARCHITECTS:

ARIEN DESIGN
6/1, DISCRETE NILAAYA, 6TH MAIN,
JEEVAN BHEEMA NAGAR, BENGALURU.
PH : 080 - 41261267.

/0.78