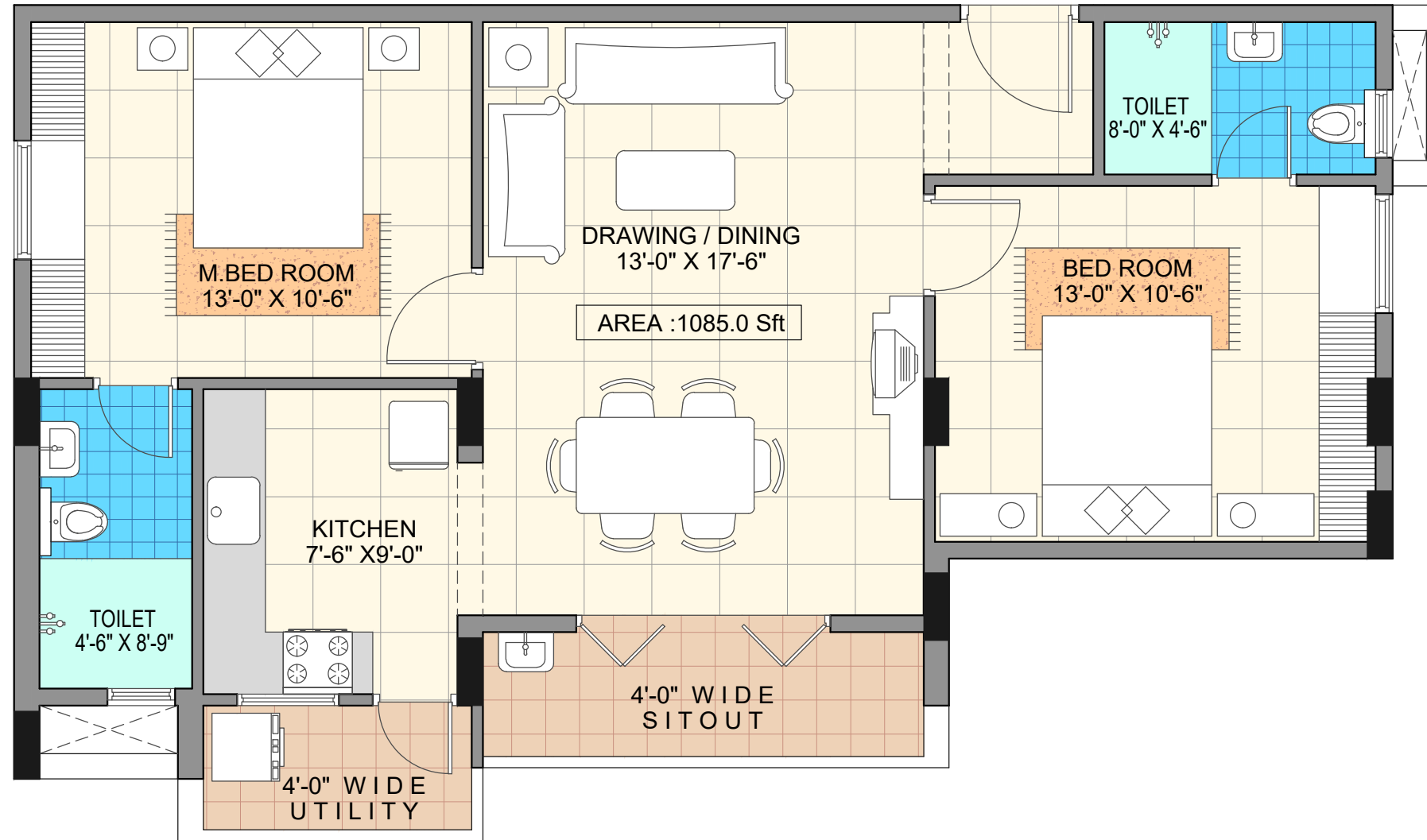


Wing - B (Typical Floor)

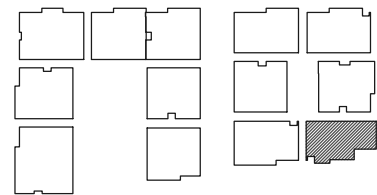
Unit - 1

2 BHK

Saleable Area - 1085 Sq. Ft.



Key Plan



PROJECT :



SAROJ
Iris
PROPOSED RESIDENTIAL APARTMENTS
AT GUNJUR, BENGALURU.

CLIENT :

SAROJ BUILDERS

TITLE :

UNIT PLANS

REV.NO	DATE OF REV	DISCRIPTION OF REVISIONS
REVISIONS		

DRAWN: RAJA

CHECKED: SASHI

APPROVED:

ID

SCALE : NTS

DATE: 09-10-2019

PROJECT NO .

DRAWING NO :

ORIENTATION



REV. NO

ARCHITECTS:

ARIEN DESIGN
6/1, DISCRETE NILAAYA, 6TH MAIN,
JEEVAN BHEEMA NAGAR, BENGALURU.
PH : 080 - 41261267.

/0.78